

—
KRONOTERM 1976
HEAT PUMPS



—
**ADDITIONAL
EQUIPMENT**

—
VERSI
heat pump

98-22-33-14703-00 - Additional equipment - VERSI

Printed in Slovenia, Copyright by Kronoterm d.o.o.

This work is protected by copyright. Any use of this document outdoor of the Copyright and Related Rights Act and without the express consent of Kronoterm d.o.o. (hereinafter: Kronoterm) is illegal and punishable by fine. This version obviates all previous versions. We reserve the right to make changes.

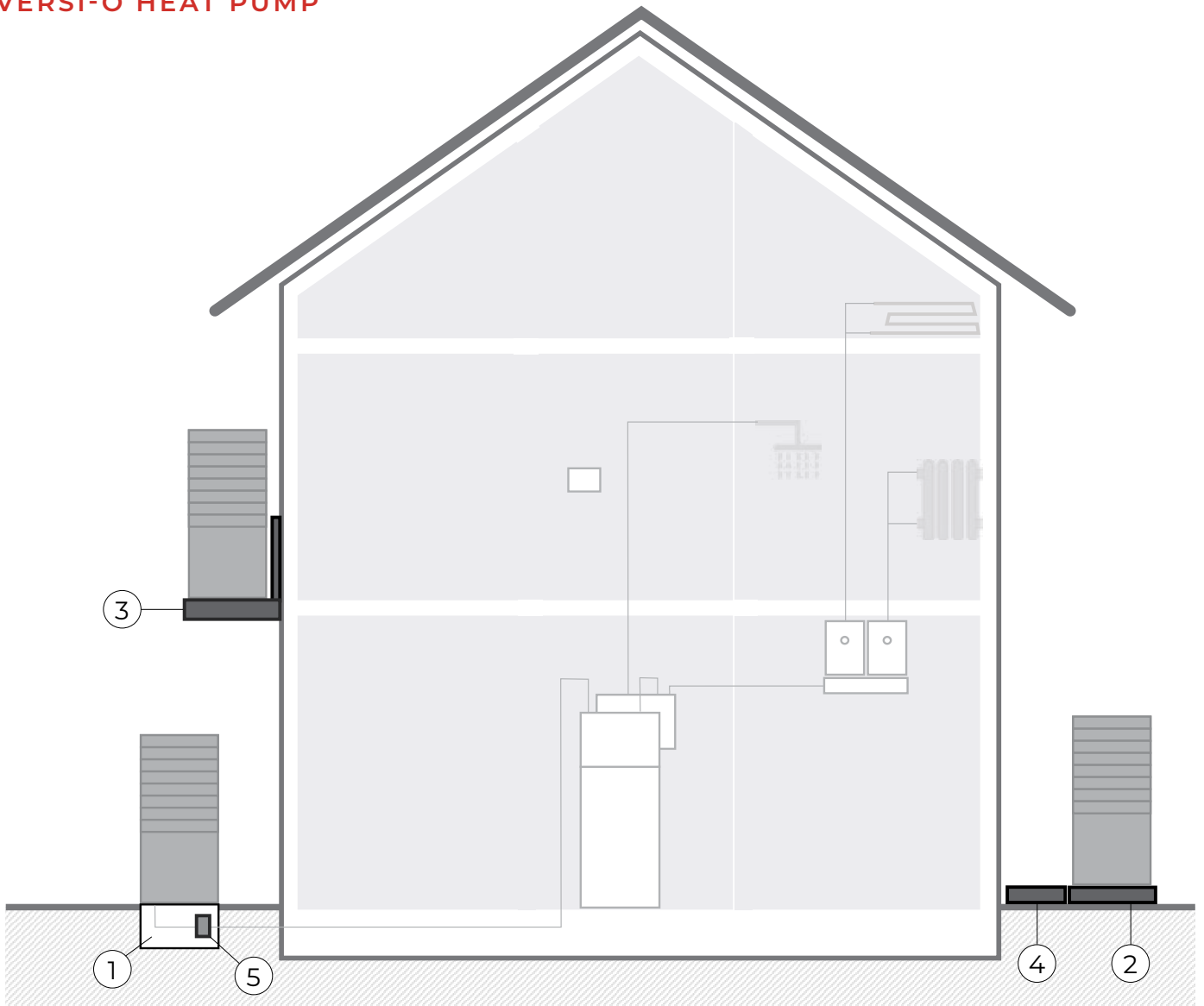
Despite taking extensive care to ensure the accuracy of all pictures and descriptions, Kronoterm reserves the right to make corrections, changes to technical details, and changes to pictures with no prior notice. Information herein is given based on the latest available product information at the time of drafting and printing this product sheet. We also reserve the right to cease sales of an individual product or even the entire collection.

Pictures are symbolic and are only intended as a reference. Despite our efforts we cannot ensure that the products' true colors will be faithfully represented in print and on electronic screens; similarly, dimensions and other graphic elements might be represented incorrectly. Products may differ from their visual representations. Write to info@kronoterm.com for any additional questions.

TABLE OF CONTENTS

VERSI-O HEAT PUMP	4
VERSI-I/X HEAT PUMP	6
AIR ELEMENTS.....	8
VERSI- X HEAT PUMP.....	12
INDOOR HYDRAULIC UNITS, CYLINDERS, BUFFER TANKS AND ADDITIONAL EQUIPMENT.....	14
EXPANSION MODULES AND ADDITIONAL EQUIPMENT	20
HEATING SYSTEM EQUIPMENT	24
INSTALLATION AND SERVICING EQUIPMENT.....	29

VERSI-O HEAT PUMP



Description Concrete base for VERSI-O

Item name ZBT_VERSI-O

Item code 2222000125738



Description Metal base for VERSI-O

Item name TKT_VERSI-O

Item code 2222000120535

VERSI-O HEAT PUMP



Description Wall mount for VERSI-O

Item name SK_VERSI-O

Item code 2222000126377



Description Cover for connecting pipes - angular, for VERSI-O

Item name PCT_K

Item code 2222000110741



Description Cover for connecting pipes - straight, for VERSI-O

Item name PCT_350-700

Item code 2222000110192

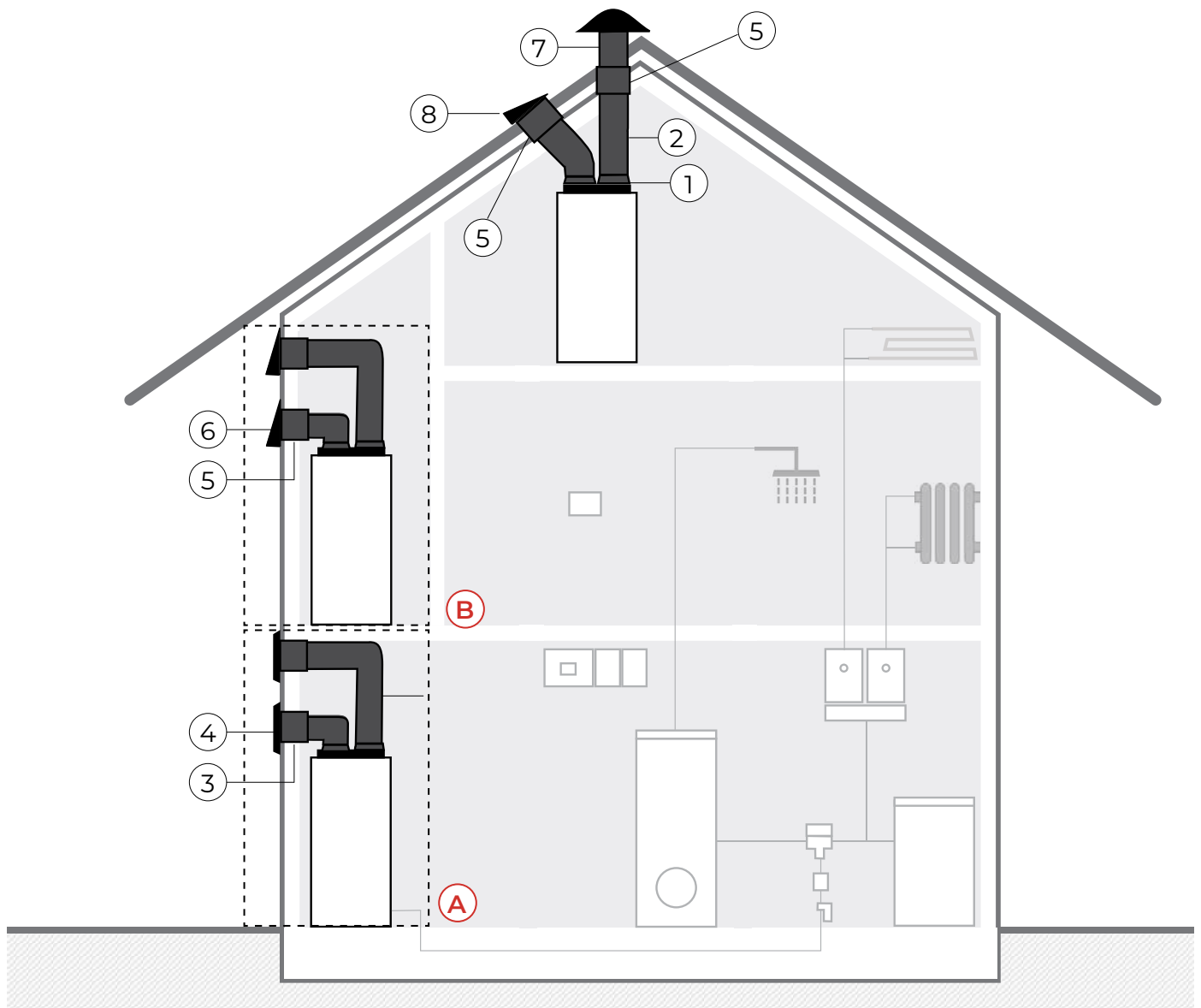


Description Safety drain valve, G 1" OT

Item name VIV_108601

Item code 2222000116453

VERSI-I/X HEAT PUMP



AIR ELEMENTS KIT - A



Description Kit of 2 VERSI air duct adapters, 2 flexible air ducts, 2 wall adapters, 2 facade elements - 2 grilles, fi 400 [mm], NEBBIA

Item name KIT_VERSI FER NEBBIA

Item codet 2222000124151



Description Kit of 2 VERSI air duct adapters, 2 flexible air ducts, 2 wall adapters, 2 facade elements - 2 grilles, fi 400 [mm], ANTHRACITE

Item name KIT_VERSI FER ANTHRACITE

Item codet 2222000124168



Description Kit of 2 VERSI air duct adapters, 2 flexible air ducts, 2 wall adapters, 2 facade elements - 2 grilles, fi 400 [mm], BLACK

Item name KIT_VERSI FER BLACK

Item code 22222000124175



Description Kit of 2 VERSI air duct adapters, 2 flexible air ducts, 2 wall adapters, 2 facade elements - 2 grilles, fi 400 [mm], NATUR - without colour coating

Item name KIT_VERSI FER NATUR

Item code 2222000124182

AIR ELEMENTS KIT - B



Description Kit of 2 VERSI air duct adapters, 2 flexible air ducts, 2 wall adapters, 2 facade elements - 2 perforated hoods, NEBBIA

Item name KIT_VERSI FEP NEBBIA

Item code 2222000124199



Description Kit of 2 VERSI air duct adapters, 2 flexible air ducts, 2 wall adapters, 2 facade elements - 2 perforated hoods, ANTHRACITE

Item name KIT_VERSI FEP ANTHRACITE

Item code 2222000124205



Description Kit of 2 VERSI air duct adapters, 2 flexible air ducts, 2 wall adapters, 2 facade elements - 2 perforated hoods, BLACK

Item name KIT_VERSI FEP BLACK

Item code 2222000124212



Description Kit of 2 VERSI air duct adapters, 2 flexible air ducts, 2 wall adapters, 2 facade elements - 2 perforated hoods, NATUR - without colour coating

Item name KIT_VERSI FEP NATUR

Item code 2222000124229

AIR ELEMENTS



Description Air duct adapter for VERSI, 250 x 500 x fi 315, with gasket and 19 [mm] insulation

Item name PK_VERSI 500x250/315

Item code 2222000126360



Description Flexible air duct for VERSI, connections fi 315 [mm], length 1,1 [m], 1 piece, 2 x gasket

Item name CE_VERSI 315 FLEXI

Item code 2222000126322



Description Facade element, grille, fi 400, NEBBIA

Item name FER_400 NEBBIA

Item code 2222000123284



Description Facade element, grille, fi 400, ANTHRACITE

Item name FER_400 ANTHRACITE

Item code 2222000123291



Description Facade element, grille, fi 400, BLACK

Item name FER_400 BLACK

Item code 2222000123307



Description Facade element, grille, fi 400, NATUR

Item name FER_400 NATUR

Item code 2222000123314

AIR ELEMENTS



Description Wall adapter for grille, fi 400/315, 9 [mm] insulation

Item name SPK_R 400/315

Item code 2222000123321



Description Wall adapter for perforated hood, fi 315/600, 9 [mm] insulation

Item name SPK_P 315/315

Item code 2222000123338



Description Facade element, perforated hood, NEBBIA

Item name FEP_NEBBIA

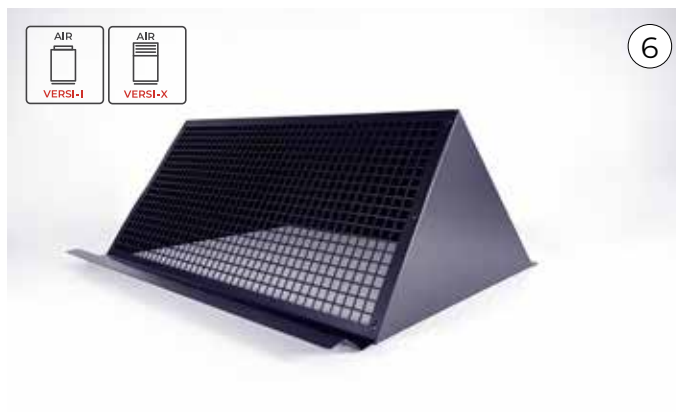
Item code 2222000123345



Description Facade element, perforated hood, BLACK

Item name FEP_BLACK

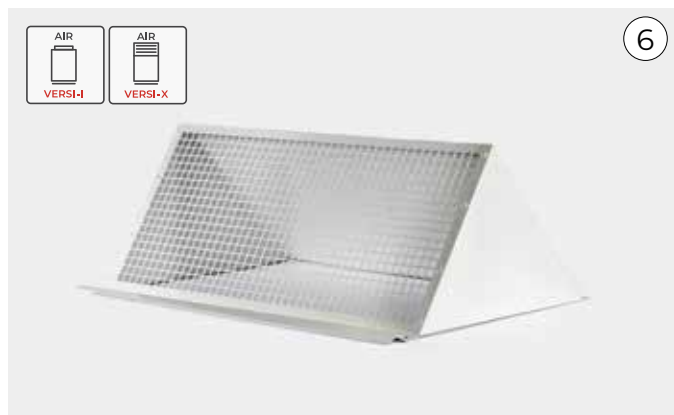
Item code 2222000123369



Description Facade element, perforated hood, ANTHRACITE

Item name FEP_ANTHRACITE

Item code 2222000123352



Description Facade element, perforated hood, NATUR

Item name FEP_NATUR

Item code 2222000123376

AIR ELEMENTS



Description Roof piece - chimney, for VERSI-I and VERSI-X

Item name SE_D VERSI

Item code 2222000129088

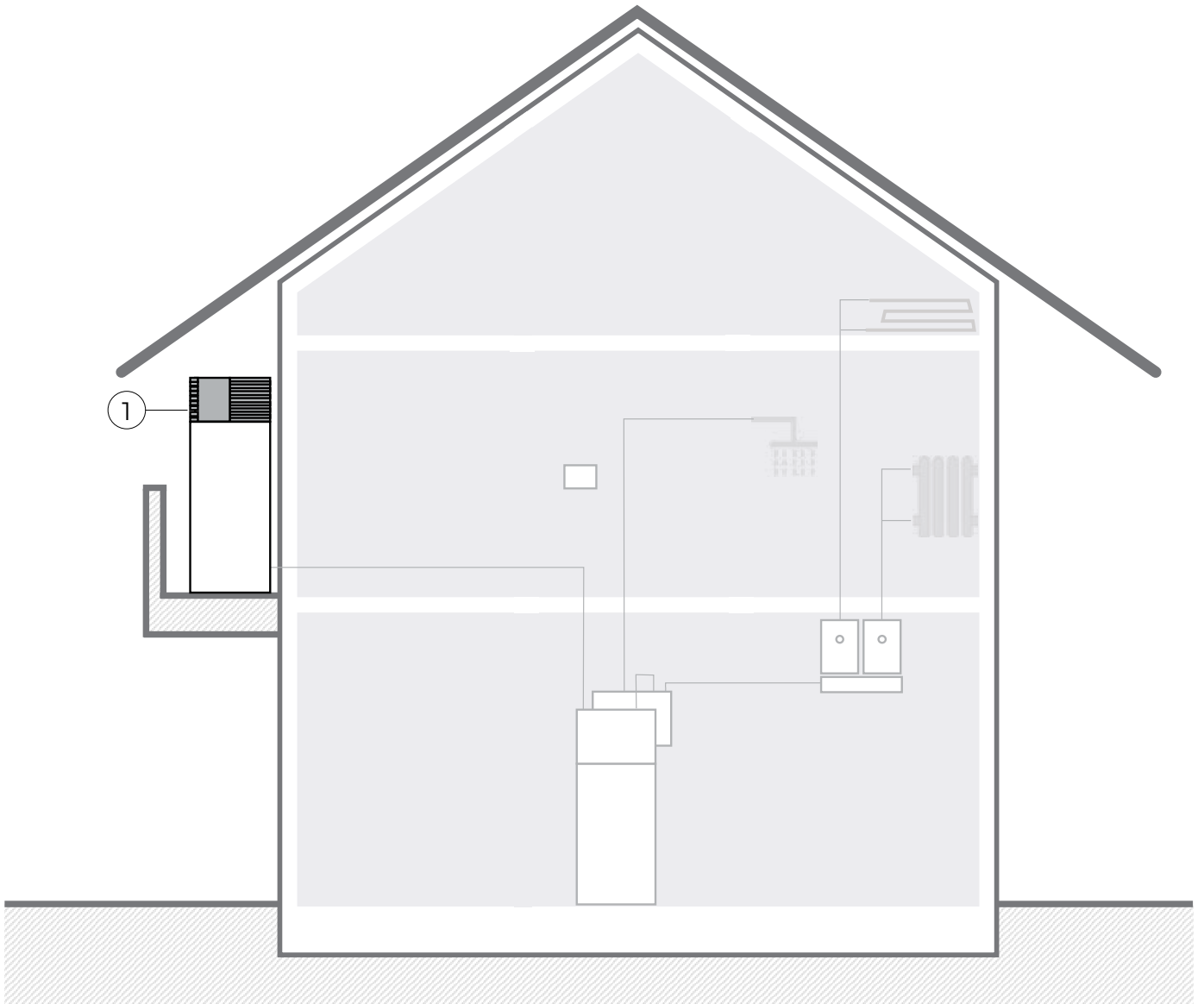


Description Roof piece - built-in, for VERSI-I and VERSI-X

Item name SE_V VERSI

Item code 2222000129095

VERSI- X HEAT PUMP



MODULAR AIR DEFLECTORS



Description Modular air deflector kit for VERSI-X, balcony configuration, front and side deflector two clamps and spacer

Item name KIT_MAD F - S

Item codet 2222000129545



Description Modular air deflector kit for VERSI-X, balcony configuration, top and side deflector two clamps and spacer

Item name KIT_MAD T - S

Item codet 2222000129552

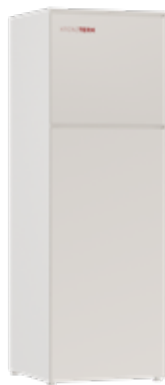
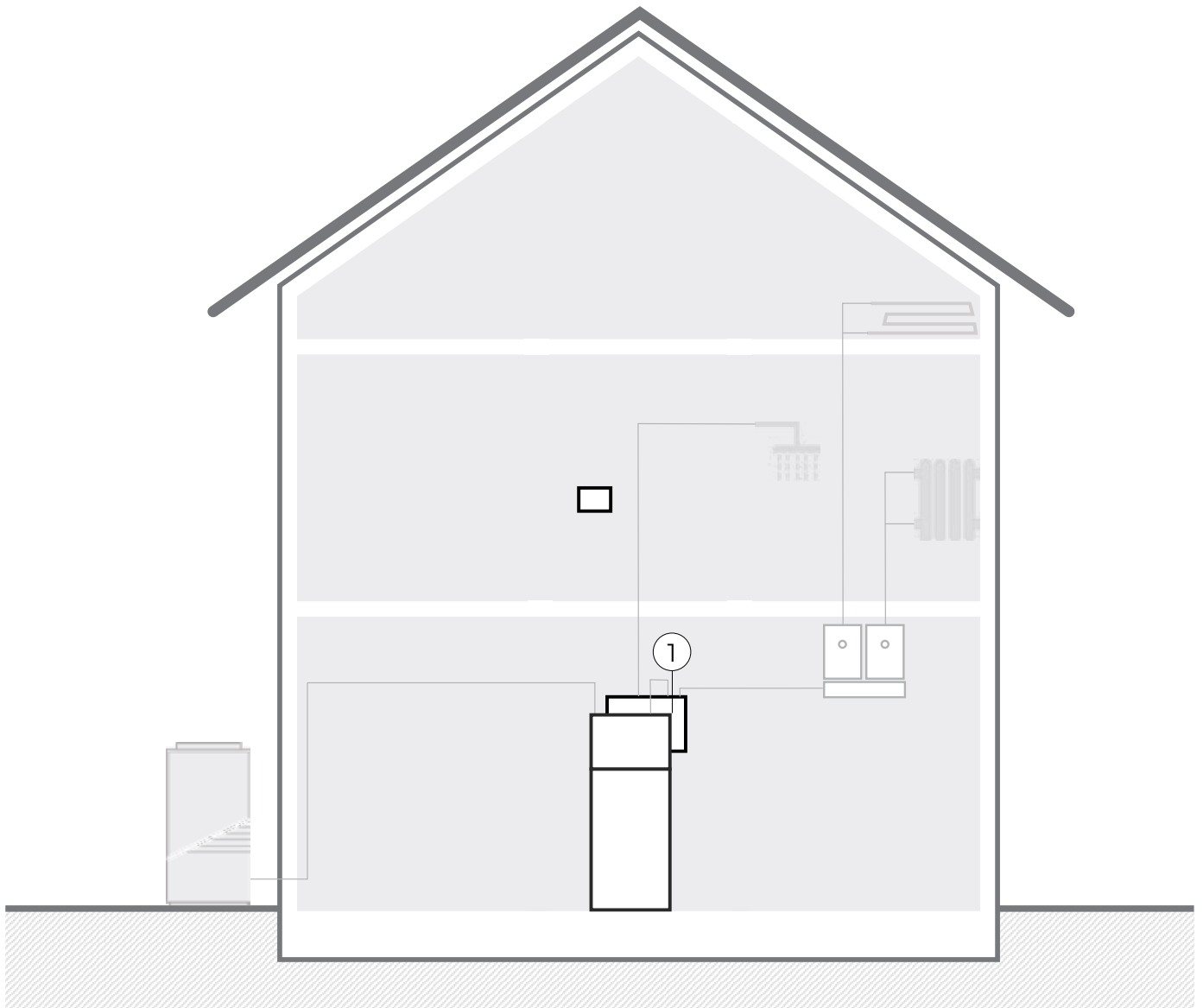


Description Modular air deflector kit for VERSI-X, balcony configuration, front and top deflector, two clamps and spacer

Item name KIT_MAD F - T

Item codet 2222000129569

INDOOR HYDRAULIC UNITS, CYLINDERS, BUFFER TANKS AND ADDITIONAL EQUIPMENT



Description Indoor compact hydraulic unit for VERSI

Item name HYDRO C2

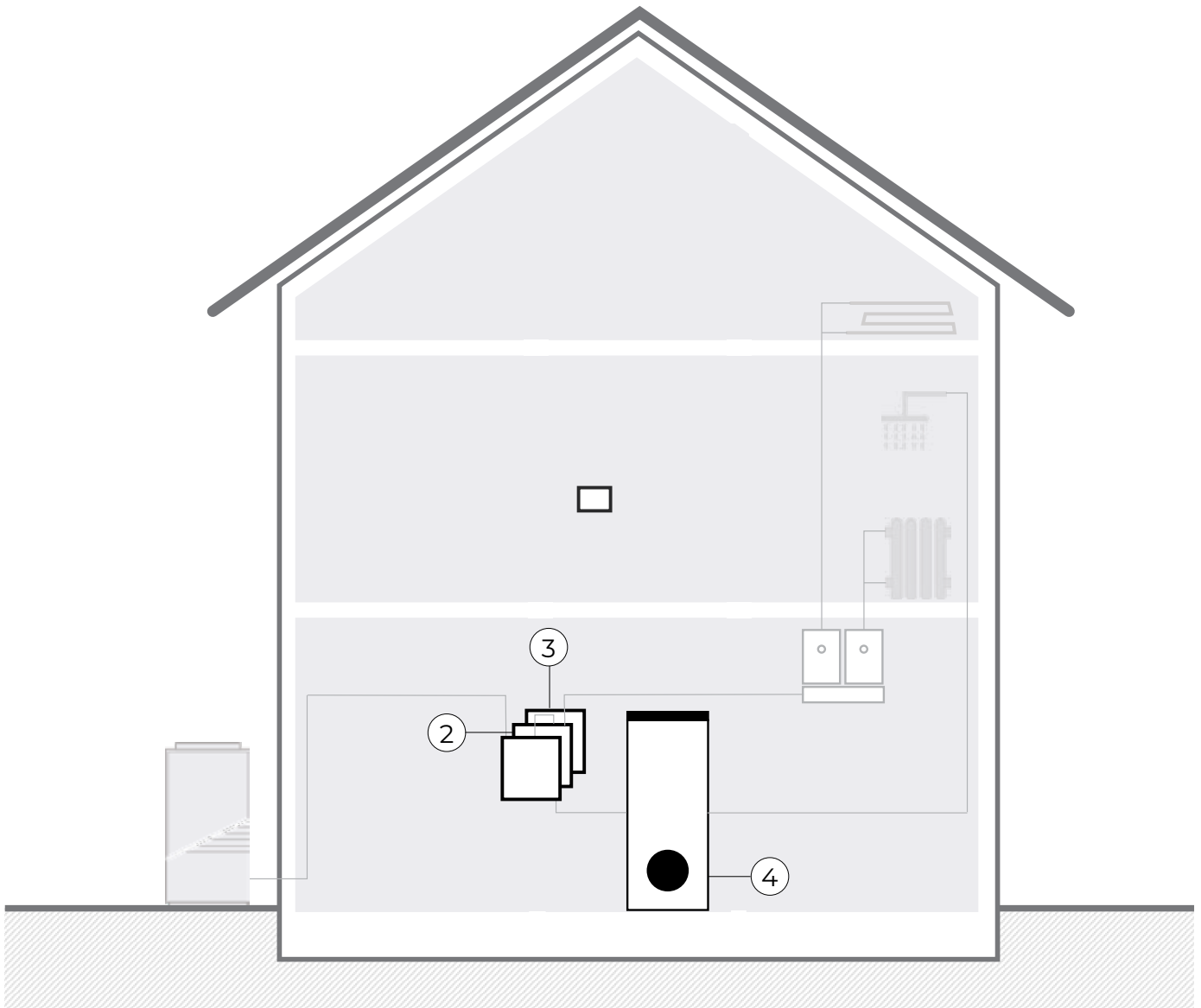
Item code 2222000115722

Description Buffer tank with insulation for HYDRO C2/CR, 40 [l] buffer tank

Item name ZA_P 40

Item code 2222000116163

INDOOR HYDRAULIC UNITS, CYLINDERS, BUFFER TANKS AND ADDITIONAL EQUIPMENT



Description Indoor wall-mounted hydraulic unit for VERSI

Item name HYDRO S2

Item code 2222000121341



Description Buffer tank for HYDRO S2/SR, 40 [l] buffer tank

Item name HYDRO P2

Item code 2222000121549

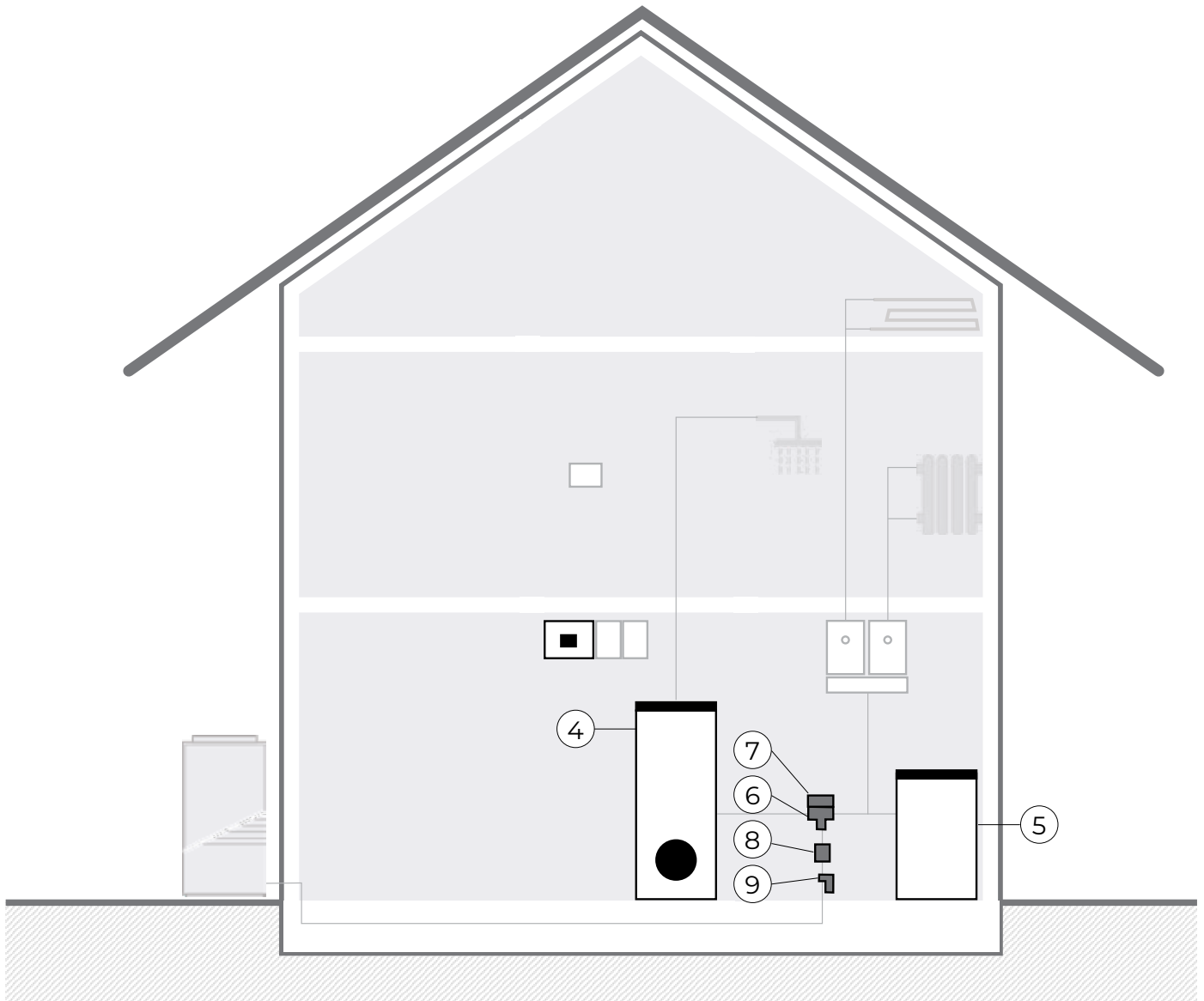


Description Wall mount and spacer for HYDRO S2/SR

Item name HYDRO A2

Item code 2222000121556

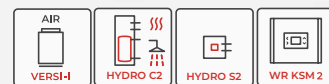
INDOOR HYDRAULIC UNITS, CYLINDERS, BUFFER TANKS AND ADDITIONAL EQUIPMENT



Description KSM 2 wall control unit

Item name WR KSM 2

Item code 2222000125745



Description Buffer tank with insulation and jacket

Item name ZA_PS 100

Item code 2222000008000

INDOOR HYDRAULIC UNITS, CYLINDERS, BUFFER TANKS AND ADDITIONAL EQUIPMENT



Description DHW cylinder, 160 [I]

Item name BO_HR 160

Item code 2222000025144

Description Foil jacket for HR-160

Item name PL_HR 160

Item code 2222000031169



Description DHW cylinder, 200 [I]

Item name BO_HR 200

Item code 2222000025175

Description Foil jacket for HR-200, white

Item name PL_HR 200 W

Item code 2222000125523

Description Foil jacket for HR-200

Item name PL_HR 200

Item code 2222000021955



Description DHW cylinder, 300 l

Item name BO_HR 300

Item code 2222000002848

Description Foil jacket for HR-300

Item name PL_HR 300

Item code 2222000006525

INDOOR HYDRAULIC UNITS, CYLINDERS, BUFFER TANKS AND ADDITIONAL EQUIPMENT



Description DHW cylinder for heat pumps, 300 [l]

Item name BO_WPS 304 TT

Item code 2222000050313



Description Buffer tank with insulation and jacket, 150 [l]

Item name ZA_PS 150 TT

Item code 2222000051013



Description Buffer tank and DHW cylinder set for heat pumps

Item name BZ_WPS 150/304 TT

Item code 2222000074296

INDOOR HYDRAULIC UNITS, CYLINDERS, BUFFER TANKS AND ADDITIONAL EQUIPMENT



Description 3-way switching valve, G 5/4" OT

Item name TVE_EMV 3P 525-32

Item code 2222000060718



Description Actuator for a 3-way switching valve

Item name EMP_EMV 110-K

Item code 2222000034580



Description Electric flowthrough heater, G 5/4" OT, power supply 3 x 230 [V], power 6 [kW]

Item name PG_6

Item code 2222000116521



Description Magnetic dirt separator, coupling 28 [mm]

Item name MLN_UE028WJ

Item code 2222000068806

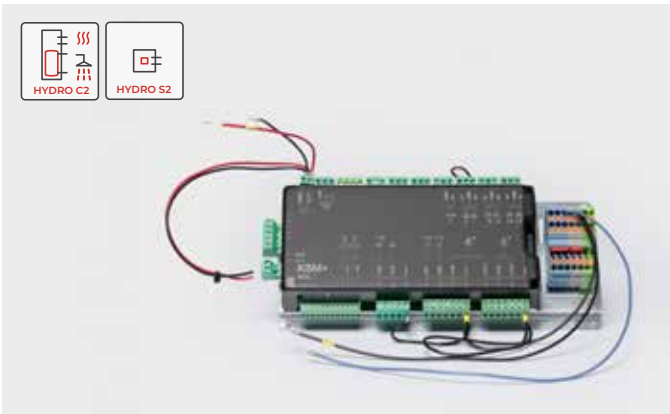


Description Magnetic dirt separator, R 1" IT

Item name MLN_UE100WJ

Item code 2222000096717

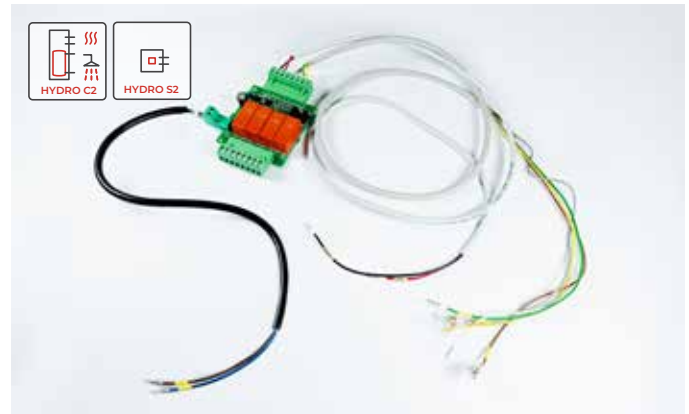
EXPANSION MODULES AND ADDITIONAL EQUIPMENT



Description Expansion module for KSM - HYDRO C2/S2

Item name KSM+ 2

Item code 2222000122492



Description Relay module for HYDRO C2/S2 and circulating pumps

Item name HYDRO PWM-R

Item code 2222000107130



Description KSM wall control unit, expansion module

Item name WR KSM+

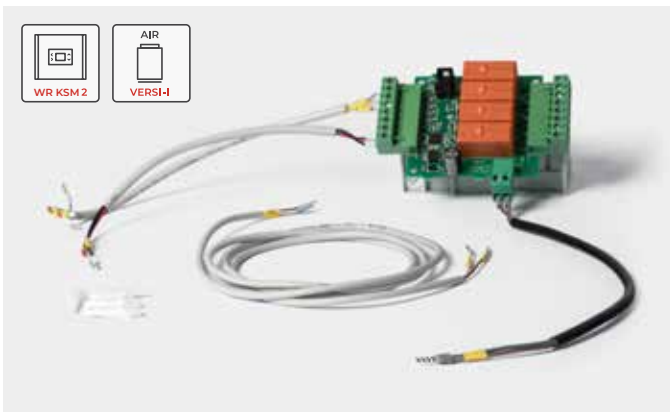
Item code 2222000112684



Description KSM wall control unit, cascade module

Item name WR KSM C

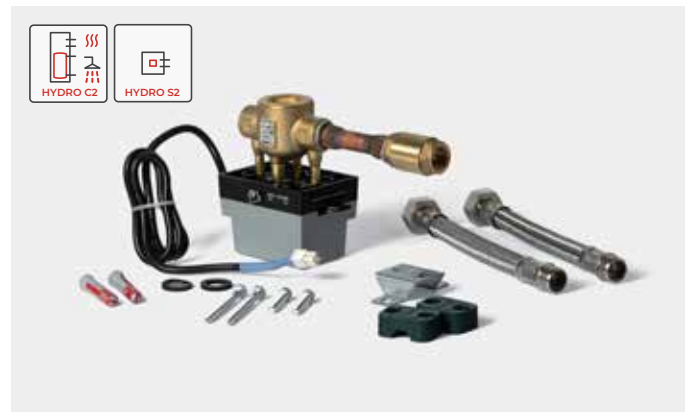
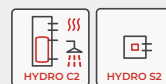
Item code 2222000112691



Description Relay module for WR KSM 2 and circulating pumps

Item name WR PWM-R

Item code 2222000118174



Description Filling set for HYDRO C2/S2/WR KSM 2; the necessary accessory is KIT_PP WR KSM 2

Item name SET_PO HYDRO

Item code 2222000122676

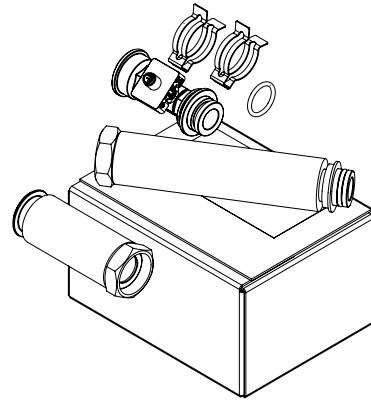
EXPANSION MODULES AND ADDITIONAL EQUIPMENT



Description Pressure sensor kit for WR KSM 2, voltage probe

Item name KIT_PP WR KSM 2

Item code 2222000129194



Description Flow sensor kit for WR KSM 2, voltage probe

Item name KIT_FP WR KSM 2

Item code 2222000129187



Description Sensor kit for cascade solution for VERSI-O/-X

Item name KIT_TT 1000

Item code 2222000129590



Description Electrical cabinet for VERSI-O/-X

Item name EO_S 1F 2kW

Item code 2222000114343



Description Electrical cabinet for VERSI-O/-X

Item name EO_S 1F 4kW

Item code 2222000114367



Description Electrical cabinet for VERSI-I/-O/-X

Item name EO_S/M 3F 6kW

Item code 2222000114404

EXPANSION MODULES AND ADDITIONAL EQUIPMENT



Description Electricity meter, 1 PH, WM1-6, to be sold only with electrical cabinet (EO_S..., M...)

Item name EO_WM1-6

Item code 2222000114428



Description Electricity meter, 3 PH, WM3-6, to be sold only with electrical cabinet (EO_S..., M..., L...)

Item name EO_WM3-6

Item code 2222000114435



Description Adapter WiFi-Ethernet, RJ45

Item name WM_WIFI EXT

Item code 2222000044688



Description Communication cable between indoor and outdoor unit, 7 [m], FTP 8 x 0,20 [mm²]

Item name KK_7M 8x0,20 FTP

Item code 2222000110246

Description Communication cable between indoor and outdoor unit, 15 [m], FTP 8 x 0,20 [mm²]

Item name KK_15M 8x0,20 FTP

Item code 2222000110253

Description Communication cable between indoor and outdoor unit, 25 [m], FTP 8 x 0,20 [mm²]

Item name KK_25M 8x0,20 FTP

Item code 2222000110260

EXPANSION MODULES AND ADDITIONAL EQUIPMENT



Description Power cable for the VERSI-I outdoor unit or HYDRO indoor unit, 7 [m] 5 x 2,5 [mm²]

Item name NK_7M 5x2,5 H05VV-F

Item code 2222000110277

Description Power cable for the VERSI-I outdoor unit or HYDRO indoor unit, 15 [m] 5 x 2,5 [mm²]

Item name NK_15M 5x2,5 H05VV-F

Item code 2222000110284

Description Power cable for the VERSI-I outdoor unit or HYDRO indoor unit, 25 [m] 5 x 2,5 [mm²]

Item name NK_25M 5x2,5 H05VV-F

Item code 2222000110291



Description Power cable for the VERSI-O/-X outdoor unit or HYDRO indoor unit, 7 [m], 3 x 2,5 [mm²]

Item name NK_7M 3x2,5 H05VV-F

Item code 2222000110307

Description Power cable for the VERSI-O/-X outdoor unit or HYDRO indoor unit, 15 [m], 3 x 2,5 [mm²]

Item name NK_15M 3x2,5 H05VV-F

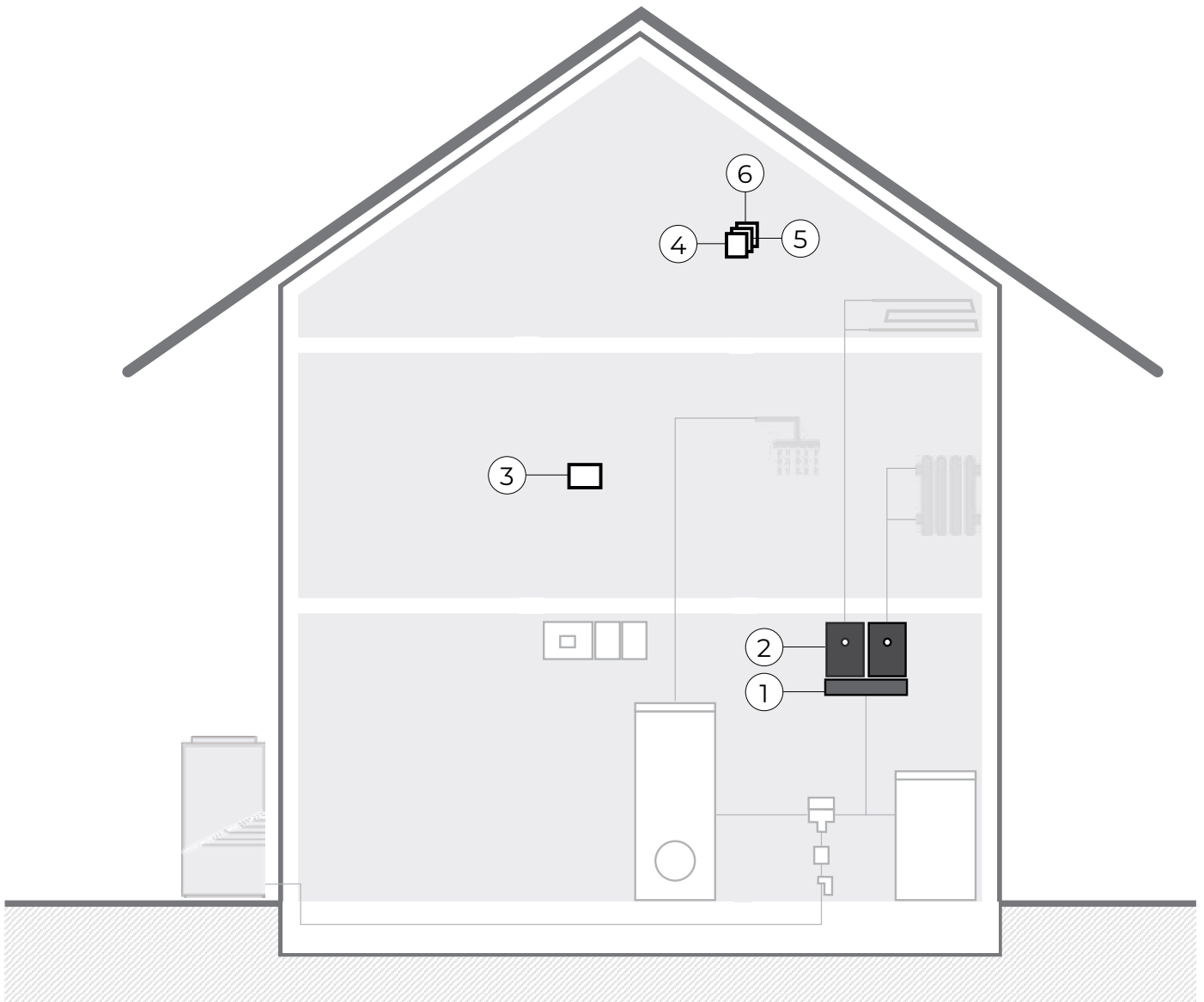
Item code 2222000110314

Description Power cable for the VERSI-O/-X outdoor unit or HYDRO indoor unit, 25 [m], 3 x 2,5 [mm²]

Item name NK_25M 3x2,5 H05VV-F

Item code 2222000110321

HEATING SYSTEM EQUIPMENT



Description Distributor with insulation, DN25 - 2V

Item name HR_DN25-2V I

Item code 2222000102487



Description Distributor with insulation, DN25 - 3V

Item name HR_DN25-3V I

Item code 2222000102470

HEATING SYSTEM EQUIPMENT



Description Distributor with insulation, DN25 - 4V

Item name HR_DN25-4V I

Item code 2222000102456



Description PWM2 heating circuit pump set, DN25, direct

Item name CS_DN25 D PWM2

Item code 2222000108083



Description PWM2 heating circuit pump set, DN25, mixing

Item name CS_DN25 M PWM2

Item code 2222000108090



Description Wall room thermostat and controller

Item name KT-2A

Item code 2222000105280



Description Wall room thermostat

Item name KT-1

Item code 2222000050566

HEATING SYSTEM EQUIPMENT



Description Wall-mounted junction box for KT-1

Item name ND_KT-1

Item code 2222000048754



Description Kit for upgrading a 2-wire cable for connecting KT-1/2A and KSM.

Item name KIT_P2P KT-1/KT-2A

Item code 2222000112844

HEATING SYSTEM EQUIPMENT



Description Highly efficient circulating pump for heating and cooling systems

Item name OC_YONOS PICO 25/1-4

Item code 2222000020330

Description Highly efficient circulating pump for heating and cooling systems

Item name OC_YONOS PICO 25/1-6

Item code 2222000019969



Description Highly efficient circulating pump for hot sanitary water, threaded connection

Item name OC_STAR-Z NOVA PN10

Item code 2222000118976

HEATING SYSTEM EQUIPMENT



Description Brazed plate heat exchanger for DHW production

Item name LPT_30_TSV

Item code 2222000126216



Description Brazed plate heat exchanger for VERSI

Item name LPT_0324

Item code 2222000113223



Description Heating system additive, for the protection of new or old heating systems

Item name AZ_100

Item code 2222000129477



Description Heating system additive, for the protection of new or old heating systems

Item name AZ_200

Item code 2222000130749



Description Hydraulic separator, DN25

Item name HL_DN25

Item code 2222000102494

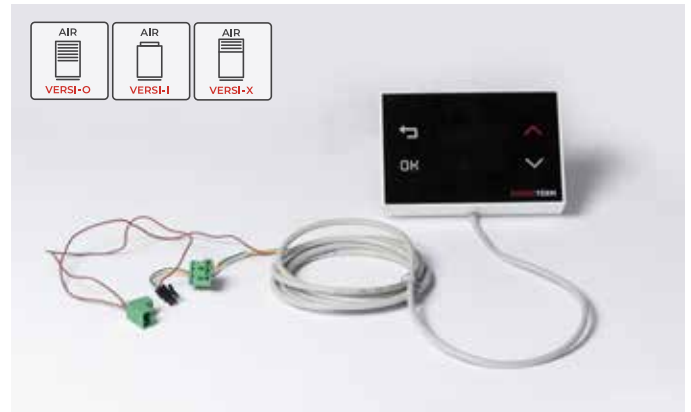
INSTALLATION AND SERVICING EQUIPMENT



Description Carry handles for VERSI

Item name NR_VERSI

Item code 2222000125509



Description KT-2A kit for technicians and commissioning engineers

Item name KIT_SI KT-2A

Item code 2222000132729



Description Upgrade Software Kit with universal 12 [V] power supply and communication interface for KSM, SecMONO and TT3000

Item name KIT_PLC MBIO SECMONO

Item code 2222000126162

Kronoterm d.o.o.

Trnava 5e, 3303 Gomilsko, SLO

T +386 3 703 16 20

www.kronoterm.com

info@kronoterm.com